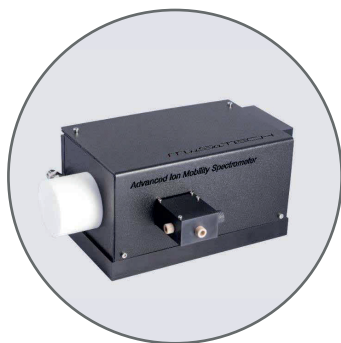




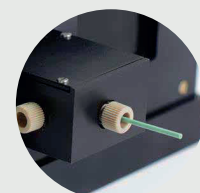
## CONFIGURABLE AIMS



Configurable Advanced Ion Mobility Spectrometer (AIMS) is an excellent tool for monitoring fast processes with high sensitivity requirement. In addition to detection of volatile and semi-volatile compounds, our IMS is the only one in the field which is suitable for solids analysis and surface analysis. The AIMS from MaSaTECH can easily achieve the resolution of up to 90 FWHM (full width half maximum), which makes it an instrument with highest resolving power in the field.

The high performance Corona Discharge ion source outperforms the conventional ions sources used in IMS and the high on current is responsible for the ultra-high sensitivity of the advanced ion mobility spectrometer. It is a perfect solution for those who need specific layout of all AIMS components. The main components of Configurable AIMS are Engine and Control Unit. Individual parts may be spaced at a distance of 0.5-2m.

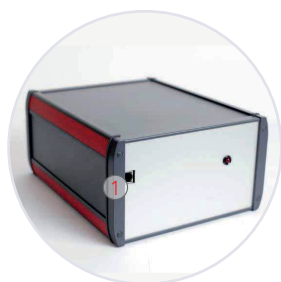
Working pressure	600 - 1200 mbar	Drift field intensity	200 - 560 V/cm
Working temperature	30 - 120 °C	Polarity	Positive/Negative
Resolving power N2/Air	90/100 FWHM	Ionization source	Corona Discharge
Sensitivity	ppb	Pre-separation	MCC - GC
Drift gas flow	500 - 1200 ml/min	Power supply	250V/24V
Sample gas flow	5 - 500 ml/min		



## DESIGNED FOR:

- 2D analysis of complex matrix
- Fast and remote monitoring of processes
- Product quality control in industry
- Volatile organic compounds monitoring
- Trace gases detection, gas detector
- Analysis of solids and surfaces
- Explosives detection
- Drug quality control
- Interface to Gas Chromatograph or to Multi Capillary Column Gas Chromatograph
- Research laboratories
- Environmental monitoring
- Indoor/Outdoor air quality monitoring
- Chemical analysis

## AIMS CONTROL UNIT



- ① PC control (Ethernet connector)
- ② HV 5pin connector  
1x +/-10kV output  
1x +/-15kV output  
1x HV -SG input  
2x HV -SG control output
- ③ +/-150V output for Aperture Grid (BNC connector)
- ④ Sync TTL output (BNC connector)
- ⑤ Firmware upgrade (RS232 connector)
- ⑥ Pump power supply (3pin connector)
- ⑦ Amp. power supply (3pin connector)
- ⑧ 25pin connector  
1x Drift Tube temp. control  
1x Sample Inlet temp. control  
1x Amplifier Fan  
1x Drift Tube Fan
- ⑨ Signal input (BNC connector)

## AIMS ENGINE



- ① Sample inlet (1/16" connector)
- ② Signal output (BNC connector)
- ③ Amplifier power supply (3 pin connector)
- ④ Drift gas inlet (3mm connector)
- ⑤ Pressure control (3mm connector)
- ⑥ HV 5pin connector  
1xHV - Target electrode input  
1xHV - SG output  
2xHV - SG control input
- ⑦ Alternative gas exhaust
- ⑧ Gas exhaust (6mm connector)
- ⑨ HV - Corona Discharge Input (SHV connector)